

# About Stanmer

## Its history

The park has been shaped by human activity for 5000 years. In the 18th century the Pelham family bought and landscaped the park and built Stanmer House.

## Its buildings

Stanmer House is an impressive restored building with a restaurant/pub. The church and pond opposite create a beautiful park setting.

There is a cafe and accessible public toilet in Stanmer Village.

## Its natural beauty

The park makes up part of a nationally important landscape as it is within the South Downs National Park.

The Stanmer Park and Estate Restoration Project aims to restore and protect Stanmer's historic buildings and landscape.

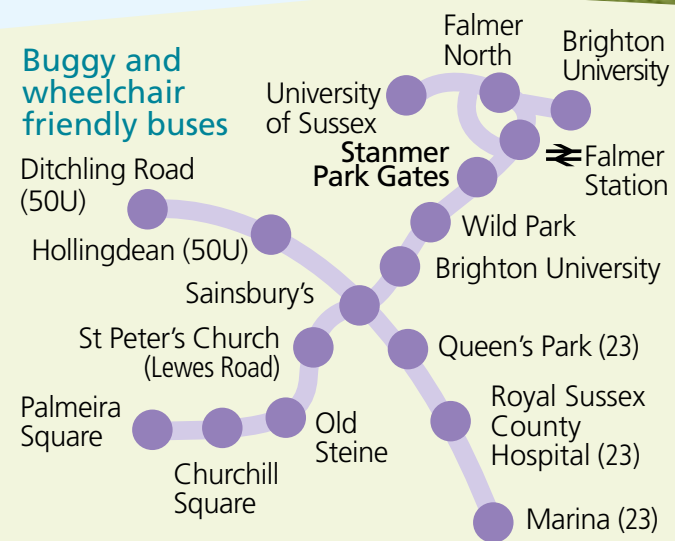
Find out more at [www.brighton-hove.gov.uk/stanmerproject](http://www.brighton-hove.gov.uk/stanmerproject)



## 23, 25, 25x, 50U bus routes

### Frequent buses taking you to the park entrance

Buses 23, 25, 25X & 50U will all drop you at the entrance to Stanmer Park. The 23, 25 / 25X run frequently, seven days a week. Service 50U runs every 30 minutes, Monday to Saturday. For information call 01273 886200 or visit [www.buses.co.uk](http://www.buses.co.uk)



### Buggy and wheelchair friendly buses

# More information

## Discounts for Bus Passengers!

Just show your valid bus ticket or pass and you can get 10% off food and drink at:

- **Stanmer House**, Stanmer Park 01273 680400 [www.stanmerhouse.co.uk](http://www.stanmerhouse.co.uk)
- **Stanmer Park Tea Rooms** 01273 604041 [www.stanmerpark-tearooms.co.uk](http://www.stanmerpark-tearooms.co.uk)
- **The Swan Inn**, Middle Street, Falmer North 01273 681842 (Discount at weekends only)

**Free Travel** for journeys that are only within Stanmer Park

## South Downs Bus Walks:

Call 01273 292480 or visit [www.brighton-hove.gov.uk/breezebuses](http://www.brighton-hove.gov.uk/breezebuses)

## Stanmer & Ditchling Beacon 'Downs on your doorstep' leaflet:

Call 01273 292929 or visit [www.brighton-hove.gov.uk/countryside](http://www.brighton-hove.gov.uk/countryside)

## Bus information or comments

Call 01273 886200 or 01273 292480  
Email [local.transport@brighton-hove.gov.uk](mailto:local.transport@brighton-hove.gov.uk)  
Visit [www.journeyon.co.uk](http://www.journeyon.co.uk) or [www.buses.co.uk](http://www.buses.co.uk)  
[twitter.com/BrightonHoveBus](https://twitter.com/BrightonHoveBus)

Breeze bus services run weekends throughout the year. The summer timetable for the 78 bus will be published in April.

## Enquiries

Brighton & Hove City Council 01273 292480  
[www.brighton-hove.gov.uk/breezebuses](http://www.brighton-hove.gov.uk/breezebuses)  
Brighton & Hove Buses 01273 886200  
[www.buses.co.uk](http://www.buses.co.uk) [twitter.com/BrightonHoveBus](https://twitter.com/BrightonHoveBus)  
traveline 0871 200 22 33 [www.traveline.info/se](http://www.traveline.info/se)

## Comments and complaints

All feedback is welcome and will help us improve the service! Call 01273 292480  
email [local.transport@brighton-hove.gov.uk](mailto:local.transport@brighton-hove.gov.uk)  
or write to Public Transport, Brighton & Hove City Council, Hove Town Hall, Hove BN3 3BQ.

Large print?  
01273 292480



SOUTH DOWNS NATIONAL PARK

Printed on 100% post consumer recycled FSC certified paper.

5952 Brighton & Hove City Council Communications Team  
Illustrations: Jo Offer 07941 156308



breeze up to...

# Stanmer Park on the 78 bus

8 October 2016 to 22 April 2017

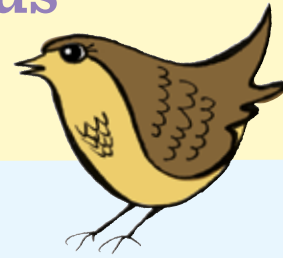
kids go free!  
Train travellers' discount



5952 Brighton & Hove City Council Communications Team  
Illustrations: Jo Offer 07941 156308

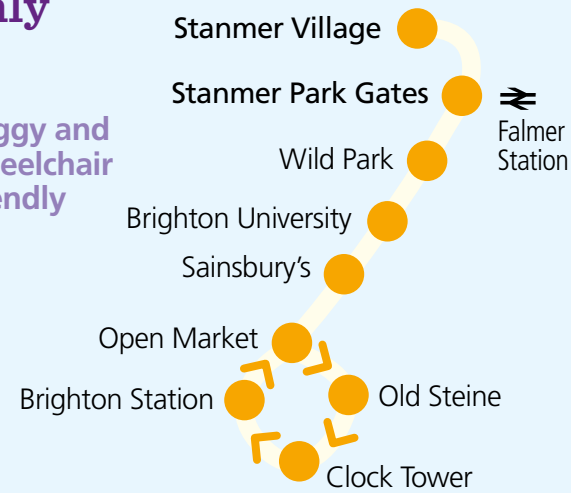
# Timetable for the 78 bus

8 October 2016 to 22 April 2017



Saturdays, Sundays and Public Holidays only

Buggy and wheelchair friendly



Within Stanmer Park, the 78 bus will stop anywhere on request. There is free travel for journeys that are only within the park. Service 78 is run by Brighton & Hove Bus Company. For bus info and any comments call 01273 292480 or visit [www.brighton-hove.gov.uk/breezebuses](http://www.brighton-hove.gov.uk/breezebuses)

We apologise for any delays in the event of road works etc. Disruption will be kept to a minimum but details of any changes can be found at [www.buses.co.uk](http://www.buses.co.uk) or [twitter.com/BrightonHoveBus](https://twitter.com/BrightonHoveBus) or phone 01273 886200.

## Fares (prices may change)

**Adults** Brighton to Stanmer Park £2.50 single, £4.50 Breeze Return (walkers can also use it to return from Ditchling Beacon or Devil's Dyke!)

**Children** Up to two children (under 16) go free when travelling with an adult. BusID holders travel for 80p each way (except before 18.00 on school days). Other children (5 – 13 only) pay half fare.

**CitySAVER and NetworkSAVER** tickets issued and accepted throughout the route – including any prepaid SAVER.

**Free Travel** for journeys that are only within the park.

**National Bus Pass holders** travel free during the usual hours of validity.

**Discovery Tickets:** a day's unlimited bus travel in Sussex, Surrey, Kent and East Hampshire. Issued and accepted by most bus companies: just buy on board the first bus you catch! Family (5 people, max 2 adults) £16, Adult £8.50, Child £7. [www.discoveryticket.co.uk](http://www.discoveryticket.co.uk)

**Rail tickets** Show rail ticket(s) valid to Brighton or Hove and get two 78 bus tickets for the price of one, or a third off an individual ticket (not SAVER and Discovery).

All prices subject to review.

## Healthy days out are a Breeze



The Breeze bus routes are your passport to fresh air and beautiful walks, in the glorious scenery of the stunning South Downs.

### Stanmer walks & events

Throughout the year there are lots of different events in Stanmer Park – including organised walks, a kite festival and charity runs. For a regularly updated list please go to [www.brighton-hove.gov.uk/events](http://www.brighton-hove.gov.uk/events) and search on 'Stanmer Park' or 'countryside'.

You can also contact the Countryside Team by phoning 01273 292929.

For ideas for your own walk see also [www.carfreewalks.org](http://www.carfreewalks.org) or for local group walks see [www.bahr.org.uk](http://www.bahr.org.uk) and [www.southdownssociety.org.uk](http://www.southdownssociety.org.uk)

**Earthship Brighton Tours:** Usually take place on two Sunday mornings each month. For more info go to [www.lowcarbon.co.uk/tours](http://www.lowcarbon.co.uk/tours)

### Health Walks:

**Every Sunday:** beautiful 3 mile guided walks, exploring the woods, village and local downland. Meet 10.45am Stanmer Tea Rooms.

**Every Thursday:** 11am, 3 or 5 mile walk from Stanmer Park Gates.

Phone 01273 292564 or visit [www.brighton-hove.gov.uk/healthwalks](http://www.brighton-hove.gov.uk/healthwalks)

## Timetable Saturdays, Sundays and Bank Holidays only for the 78 bus 8 October 2016 - 22 April 2017

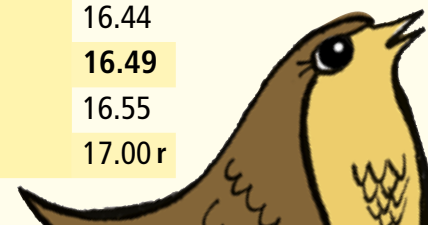
<b>Brighton, Old Steine (stop U<sup>+</sup>)</b>	<b>10.00</b>		<b>16.00</b>
<b>Brighton Station (stop D) ⇌</b>	10.05		16.05
<b>Open Market, Oxford Street</b>	10.12		16.12
<b>Lewes Road, opp. Bus Garage</b>	10.17	then	16.17
<b>Brighton University, The Avenue</b>	10.20	at	16.20
<b>Lewes Road, Coldean Lane</b>	10.24	the	16.24
<b>Stanmer Park Gates</b>	10.27	same	16.27
<b>Stanmer Village Church - Arrive</b>	<b>10.30</b>	times	<b>16.30</b>
<b>Stanmer Village Church - Depart</b>	<b>10.33</b>	every	<b>16.33</b>
<b>Stanmer Park Gates</b>	10.36	hour	16.36
<b>Lewes Road, Coldean Lane</b>	10.37	until	16.37
<b>Brighton University, The Avenue</b>	10.41		16.41
<b>Lewes Road, Bus Garage</b>	10.44		16.44
<b>London Road, Shops (stop S)</b>	<b>10.49</b>		<b>16.49</b>
<b>Old Steine (stop U<sup>+</sup>)</b>	10.55		16.55
<b>Brighton Station (stop D) ⇌</b>	<b>11.05</b>		<b>17.00 r</b>

+ Old Steine 78 bus stop: stop U is in the south west corner of Old Steine

r The 16.33 journey from Stanmer Village serves Brighton Station on request to the driver.

Taxi numbers (in case you miss the last bus!) are: 01273 747474, 01273 204060, 01273 414141, 01273 205205.

All buses are buggy and wheelchair-friendly.



## Things to do


### Stanmer Park Easy Access Route

This five mile route, which is mainly surfaced, is one of many walks and activities shown in the Stanmer & Ditchling Beacon 'Downs on your Doorstep' leaflet. For a copy phone 01273 292929 or go to [www.brighton-hove.gov.uk/countryside](http://www.brighton-hove.gov.uk/countryside)

### Breeze up to Ditchling Beacon

on the weekend 79 bus, do a stunning 2.8 mile walk to Stanmer Park and return to Brighton on the 78 bus.

**Stanmer Nursery** is near Stanmer House. Open Monday to Friday all year – for fabulous plants! [www.brighton-hove.gov.uk/stanmernursery](http://www.brighton-hove.gov.uk/stanmernursery)

 **Bike it by 78 Bus!** Buses on the 78 & 79 routes to Stanmer Park & Ditchling Beacon have space on board for 2 bikes. There's no charge for bikes and it's first come first served. Please follow the driver's instructions and make sure your bike is secured safely.

## Have you seen?

See the two other 'Breeze up to the Downs' leaflets about how to get to Devil's Dyke and Ditchling Beacon.

Call 01273 292480 for copies or go to [www.brighton-hove.gov.uk/breezebuses](http://www.brighton-hove.gov.uk/breezebuses)

